

## “Lapala” hand-woven low armchair / sillón bajo tejido

C591T

### OUT

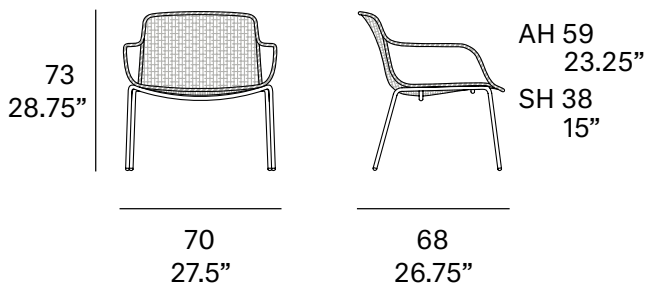
Armchair made of stainless steel tube. Hand-woven seat and backrest with high resistance polyester rope 7 mm/0.27" thick. Legs made of lacquered stainless steel tube. Stackable

*Sillón fabricado en tubo de acero inoxidable. Asiento y respaldo tejidos a mano artesanalmente con cuerda de poliéster de alta resistencia de 7 mm de sección. Patas fabricadas en tubo de acero inoxidable lacado. Apilable.*



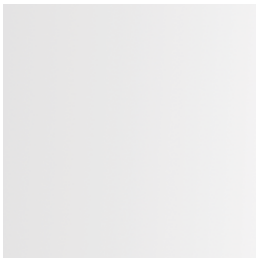
#### Shipment details

Qty	2 armchairs (1 box)
Volume	0,50 m <sup>3</sup> / 17.7 ft <sup>3</sup>
Gross weight	26 kg / 57 lb
Net weight (x2)	22 kg / 48 lb
Net weight (x1)	11 kg / 24 lb
Item dimensions (width x depth x height)	70 x 68 x 73 cm 27.5" x 26.75" x 28.75"

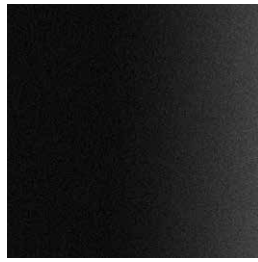


## Frame / estructura

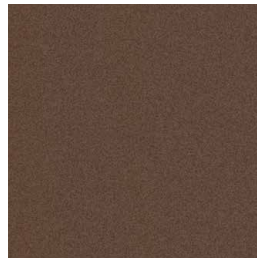
metallic finishes / metales



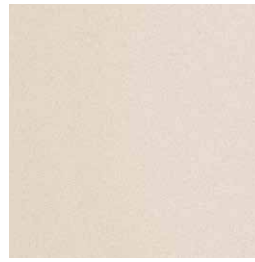
100 white



101 FT black  
fine textured



108 FT oxide  
fine textured



109 FT champagne  
fine textured

## Polyester rope / cuerda de poliéster

7 mm / 0.27" thick



400 white



401 black



407 taupe



410 SPK  
orange



411 SPK  
dark orange



413 SPK  
oxide