

## “Lapala” hand-woven footstool / *banqueta tejida*

C590T

OUT

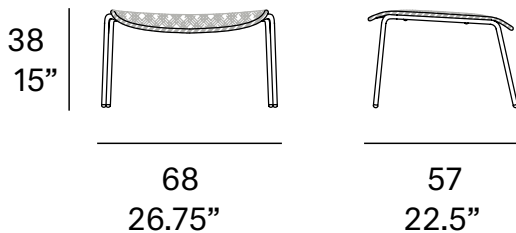


Footstool made of stainless steel tube. Hand-woven seat and backrest with high resistance polyester rope 7 mm/0.27" thick. Legs made of lacquered stainless steel tube. Stackable

*Banqueta fabricada en tubo de acero inoxidable. Asiento y respaldo tejidos a mano artesanalmente con cuerda de poliéster de alta resistencia de 7 mm de sección. Patas fabricadas en tubo de acero inoxidable lacado. Apilable.*

### Shipment details

Qty	2 footstools (1 box)
Volume	0,20 m <sup>3</sup> / 7 ft <sup>3</sup>
Gross weight	17 kg / 37 lb
Net weight (x2)	13 kg / 28 lb
Net weight (x1)	6,5 kg / 14 lb
Item dimensions (width x depth x height)	68 x 57 x 38 cm 26.75" x 22.5" x 15"



## Frame / estructura

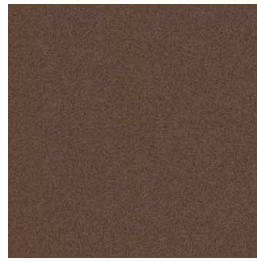
metallic finishes / metales



100 white



101 FT black  
fine textured



108 FT oxide  
fine textured



109 FT champagne  
fine textured

## Polyester rope / cuerda de poliéster

7 mm / 0.27" thick



400 white



401 black



407 taupe



410 SPK  
orange



411 SPK  
dark orange



413 SPK  
oxide