

“Lapala” hand-woven chair / silla tejida

C597T

OUT

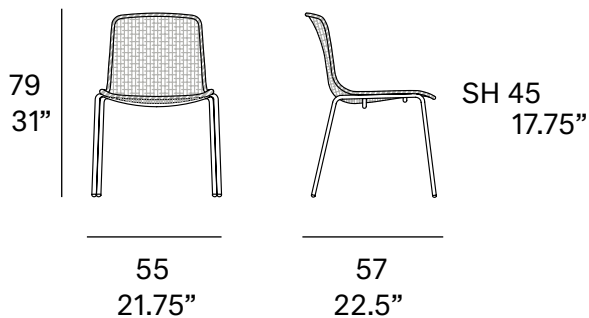


Chair made of stainless steel tube. Hand-woven seat and backrest with high resistance polyester rope 7 mm/0.27" thick. Legs made of lacquered stainless steel tube. Stackable

Silla fabricada en tubo de acero inoxidable. Asiento y respaldo tejidos a mano artesanalmente con cuerda de poliéster de alta resistencia de 7 mm de sección. Patas fabricadas en tubo de acero inoxidable lacado. Apilable.

Shipment details

Qty	2 chairs (1 box)
Volume	0,37 m ³ / 13 ft ³
Gross weight	20 kg / 44 lb
Net weight (x2)	16 kg / 36 lb
Net weight (x1)	8 kg / 18 lb
Item dimensions (width x depth x height)	55 x 57 x 79 cm 21.75" x 22.5" x 31"



Certifications

UNE EN 581-1:2006
UNE EN 581-2:2016
UNE EN 1022:2005

Frame / estructura

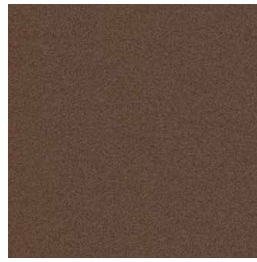
metallic finishes / metales



100 white



101 FT black
fine textured



108 FT oxide
fine textured



109 FT champagne
fine textured

Polyester rope / cuerda de poliéster

7 mm / 0.27" thick



400 white



401 black



407 taupe



410 SPK
orange



411 SPK
dark orange



413 SPK
oxide