

“Lapala” hand-woven barstool / *taburete tejido*

C599T

OUT

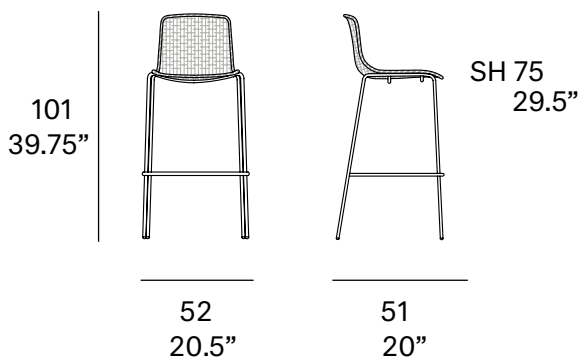


Barstool made of stainless steel tube. Hand-woven seat and backrest with high resistance polyester rope 7 mm/0.27" thick. Legs made of lacquered stainless steel tube. Stackable

Taburete fabricado en tubo de acero inoxidable. Asiento y respaldo tejidos a mano artesanalmente con cuerda de poliéster de alta resistencia de 7 mm de sección. Patas fabricadas en tubo de acero inoxidable lacado. Apilable.

Shipment details

| | |
|---|--|
| Qty | 2 barstools (1 box) |
| Volume | 0,40 m ³ / 14.1 ft ³ |
| Gross weight | 18 kg / 40 lb |
| Net weight (x2) | 14 kg / 30 lb |
| Net weight (x1) | 7 kg / 15 lb |
| Item dimensions (width x depth x height) | 52 x 51 x 101 cm 20.5" x 20" x 39.75" |



Frame / estructura

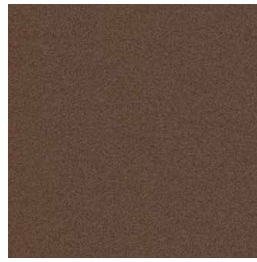
metallic finishes / metales



100 white



101 FT black
fine textured



108 FT oxide
fine textured



109 FT champagne
fine textured

Polyester rope / cuerda de poliéster

7 mm / 0.27" thick



400 white



401 black



407 taupe



410 SPK
orange



411 SPK
dark orange



413 SPK
oxide