

## “Lapala” hand-woven dining armchair / *sillón comedor tejido*

C596T

OUT

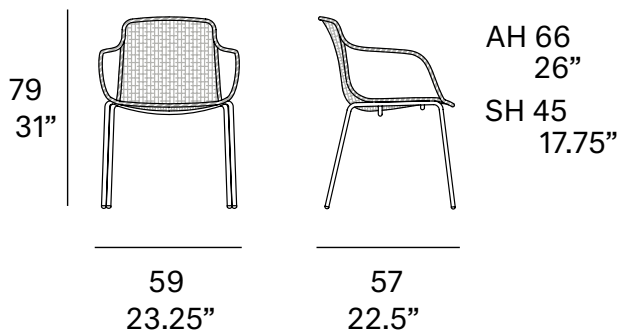


Dining armchair made of stainless steel tube. Hand-woven seat and backrest with high resistance polyester rope 7 mm/0.27" thick. Legs made of lacquered stainless steel tube. Stackable

*Sillón comedor fabricado en tubo de acero inoxidable. Asiento y respaldo tejidos a mano artesanalmente con cuerda de poliéster de alta resistencia de 7 mm de sección. Patas fabricadas en tubo de acero inoxidable lacado. Apilable.*

### Shipment details

Qty	2 dining armchairs (1 box)
Volume	0,40 m <sup>3</sup> / 14.2 ft <sup>3</sup>
Gross weight	22 kg / 49 lb
Net weight (x2)	18 kg / 40 lb
Net weight (x1)	9 kg / 20 lb
Item dimensions (width x depth x height)	59 x 57 x 79 cm 23.25" x 22.5" x 31"

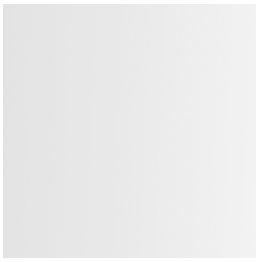


### Certifications

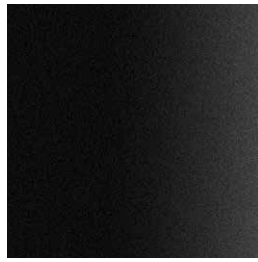
UNE EN 581-1:2006  
UNE EN 581-2:2016  
UNE EN 1022:2005

## Frame / estructura

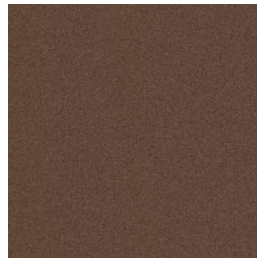
metallic finishes / metales



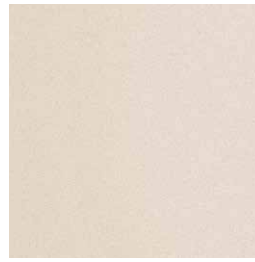
100 white



101 FT black  
fine textured



108 FT oxide  
fine textured



109 FT champagne  
fine textured

## Polyester rope / cuerda de poliéster

7 mm / 0.27" thick



400 white



401 black



407 taupe



410 SPK  
orange



411 SPK  
dark orange



413 SPK  
oxide