

“Grada outdoor” round coffee table / *centro redondo*

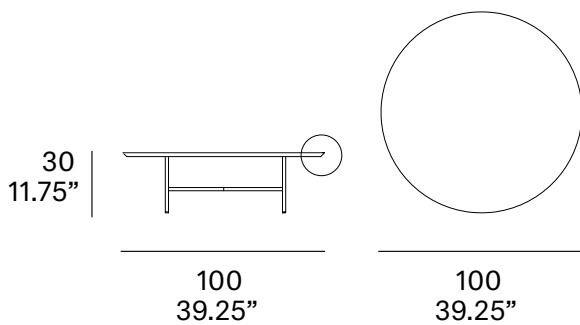
C916

OUT

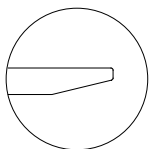


Structure made of stainless steel tube, finished with polyester powder. Three tabletop options: Trespa® HPL 13 mm/0.51" thick, Dekton® and Kerlite® porcelain.

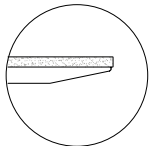
Estructura fabricada en tubo de acero inoxidable, acabado en pintura de polvo de poliéster. Tres opciones de tablero: HPL Trespa® de 13 mm, Dekton® y porcelánico Kerlite®.



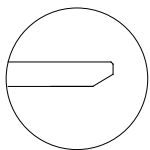
Tabletop options:



- Trespa® HPL 13 mm/0.51" thick.



- Kerlite® porcelain 5 mm/0.19" + Trespa® HPL 8 mm/0.31" thick.



- Dekton® 12 mm/0.47".

Shipment details

Qty 1 coffee table (2 boxes)
Volume 0,24 m³ / 8.5 ft³

HPL top option

Gross weight 17 kg / 37 lb
Net weight 13 kg / 29 lb

Kerlite top option

Gross weight 26 kg / 57 lb
Net weight 22 kg / 49 lb

Dekton top option

Gross weight 36 kg / 79 lb
Net weight 32 kg / 71 lb

Box 1 - dimensions

63 x 63 x 33 cm
24.75" x 24.75" x 13"

Box 2 - dimensions

106 x 106 x 7 cm
41.75" x 41.75" x 2.75"

Item dimensions

(width x depth x height)

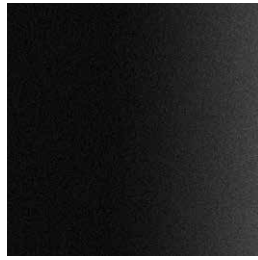
100 x 100 x 30 cm
39.25" x 39.25" x 11.75"

Frame / estructura

metallic finishes / metales



100 white



101 black



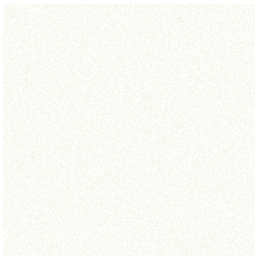
108 FT oxide
fine textured



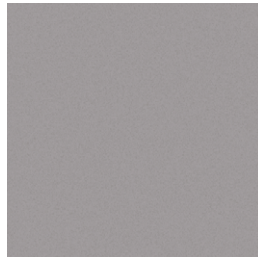
109 FT champagne
fine textured

Top / tapa

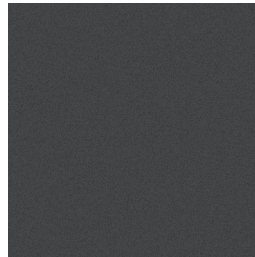
HPL Trespa®



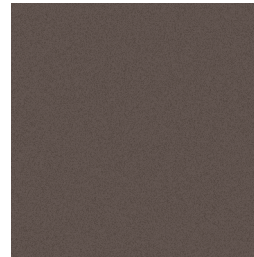
300 white



302 grey



303 anthracite



308 natural greige

Kerlite®



K11 champagne



K12 argerot

Dekton®



D1 irok



D2 kelya