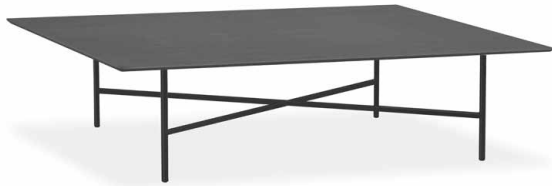


“Grada outdoor” rectangular coffee table / centro rectangular

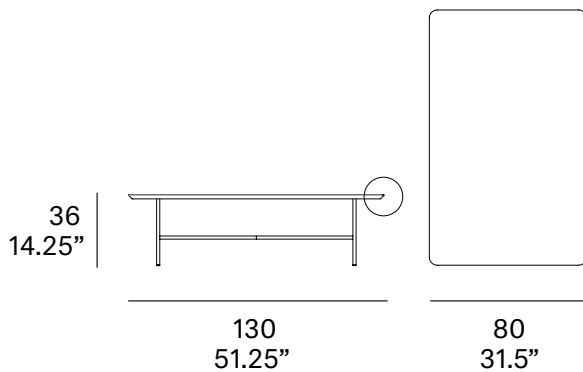
C915

OUT

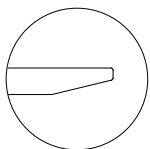


Structure made of stainless steel tube, finished with polyester powder. Three tabletop options: Trespa® HPL 13 mm/0.51" thick, Dekton® and Kerlite® porcelain.

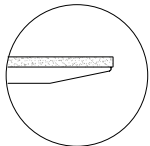
Estructura fabricada en tubo de acero inoxidable, acabado en pintura de polvo de poliéster. Tres opciones de tablero: HPL Trespa® de 13 mm, Dekton® y porcelánico Kerlite®.



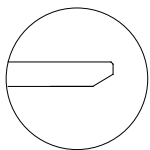
Tabletop options:



- Trespa® HPL 13 mm/0.51" thick.



- Kerlite® porcelain 5 mm/0.19" + Trespa® HPL 8 mm/0.31" thick.



- Dekton® 12 mm/0.47".

Shipment details

Qty 1 coffee table (2 boxes)

Volume 0,28 m³ / 9.9 ft³

HPL top option

Gross weight 21 kg / 46 lb

Net weight 18 kg / 40 lb

Kerlite top option

Gross weight 31 kg / 68 lb

Net weight 27 kg / 60 lb

Dekton top option

Gross weight 43 kg / 95 lb

Net weight 39 kg / 86 lb

Box 1 - dimensions

103 x 53 x 39 cm

40.5" x 20.75" x 15.25"

Box 2 - dimensions

136 x 86 x 7 cm

53.5" x 33.75" x 2.75"

Item dimensions

(width x depth x height)

130 x 80 x 36 cm

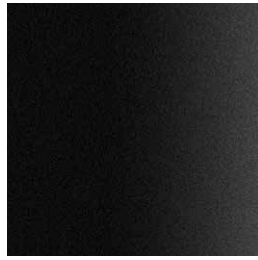
51.25" x 31.5" x 14.25"

Frame / estructura

metallic finishes / metales



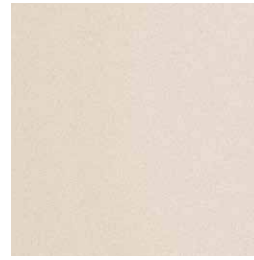
100 white



101 black



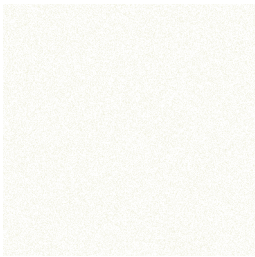
108 FT oxide
fine textured



109 FT champagne
fine textured

Top / tapa

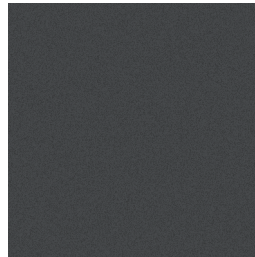
HPL Trespa®



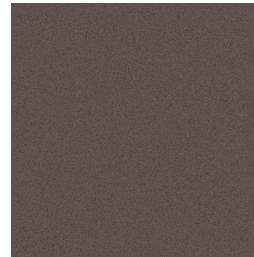
300 white



302 grey



303 anthracite



308 natural greige

Kerlite®



K11 champagne



K12 argerot

Dekton®



D1 irok



D2 kelya